



SIMMONS & SON



Stoke Gardens, Slough, SL1 3QB

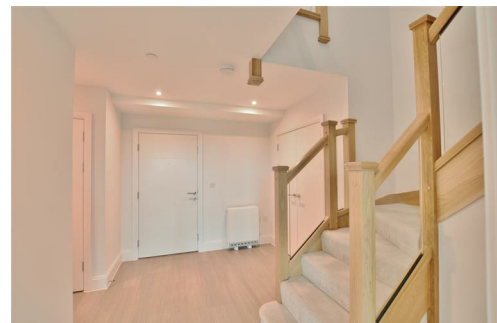
Price £649,950 Leasehold

Welcome to Stoke Gardens, Slough - a truly remarkable location for this stunning three-bedroom, duplex penthouse suite. This new build property offers luxurious living with breathtaking views of Windsor Castle.

Situated in a converted flat, this property boasts modern amenities and a spacious layout perfect for a growing family or those who love to entertain. With three well-appointed bedrooms and three stylish bathrooms, comfort and convenience are at the forefront of this home. Including a concierge service, cinema, a well-equipped gym, and more, all within the building. Additionally, the private rooftop garden presents breathtaking panoramic views towards Windsor, ideal for unwinding after a long day.

The highlight of this property is the duplex penthouse layout, offering a unique living experience with plenty of natural light and a sense of openness throughout. Imagine waking up to panoramic views of Windsor Castle every morning - a truly majestic sight to behold.

Whether you're looking for a peaceful retreat or a place to host gatherings with friends and family, this property has it all. Don't miss out on the opportunity to own a piece of luxury in this prime location. Contact us today to arrange a viewing and experience the beauty of this exceptional home for yourself.



Stoke Gardens, Slough, Berkshire, SL1 3QB



- Restoration of the iconic Horlicks Factory, built in 1908
- Spacious and light industrial-inspired interiors
- Fantastic residents' facilities inside the building – concierge, gym and more
- Three Bedroom Duplex Penthouse
- 15 minutes to London Paddington by train
- 0.3 mile to Slough train station; 10 miles to Heathrow Airport
- Set in landscaped grounds with water features, play areas and cycle routes.
- A private rooftop garden offering panoramic views towards Windsor
- Current Ground Rent (£ per annum) - Peppercorn - Service Charge - Call to discuss
- Leasehold - 999 Years Remaining

Energy Efficiency Rating		Current	Potential
Very energy efficient - lower running costs			
(92 plus) A			
(81-91) B			
(69-80) C			
(55-68) D			
(39-54) E			
(21-38) F			
(1-20) G			
Not energy efficient - higher running costs			
England & Wales		EU Directive 2002/91/EC	

Environmental Impact (CO ₂) Rating		Current	Potential
Very environmentally friendly - lower CO ₂ emissions			
(92 plus) A			
(81-91) B			
(69-80) C			
(55-68) D			
(39-54) E			
(21-38) F			
(1-20) G			
Not environmentally friendly - higher CO ₂ emissions			
England & Wales		EU Directive 2002/91/EC	

Google Map data ©2026 Imagery ©2026 Maxar Technologies